

# Installation Guide

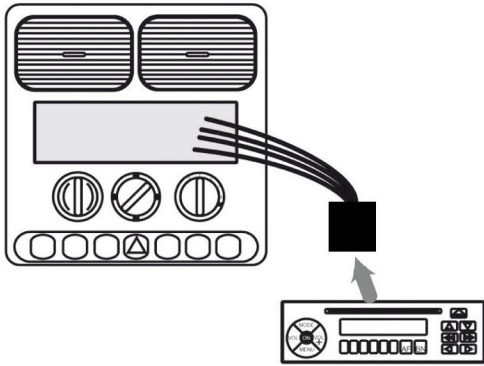
## Steering wheel control Interface



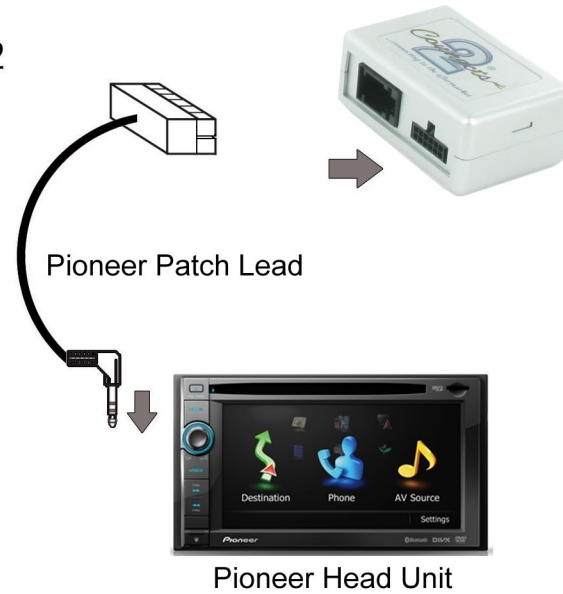
CA-R-FOR.005  
Ford Focus 2011>



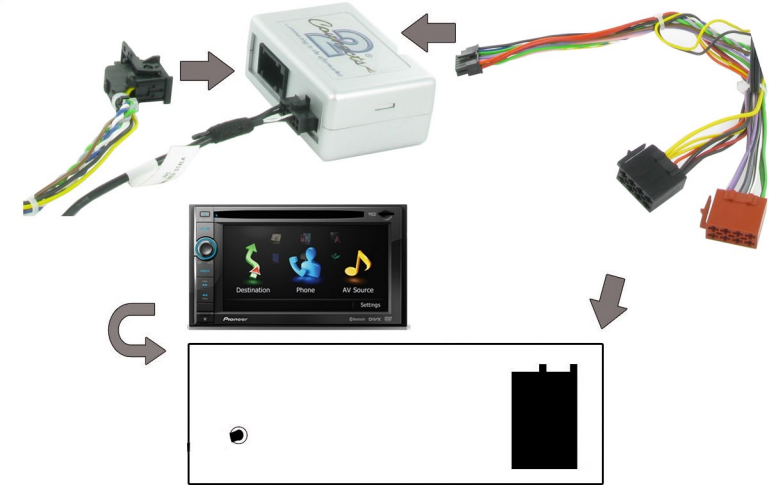
### 1 Remove Original Head Unit



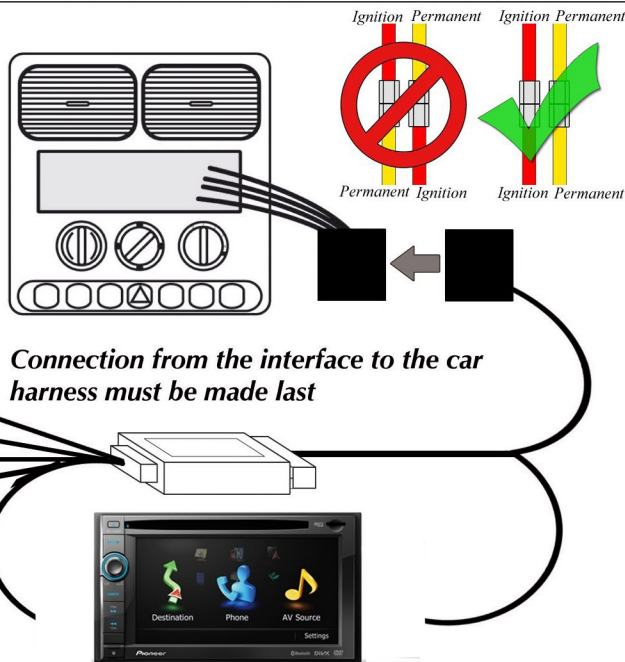
### 2



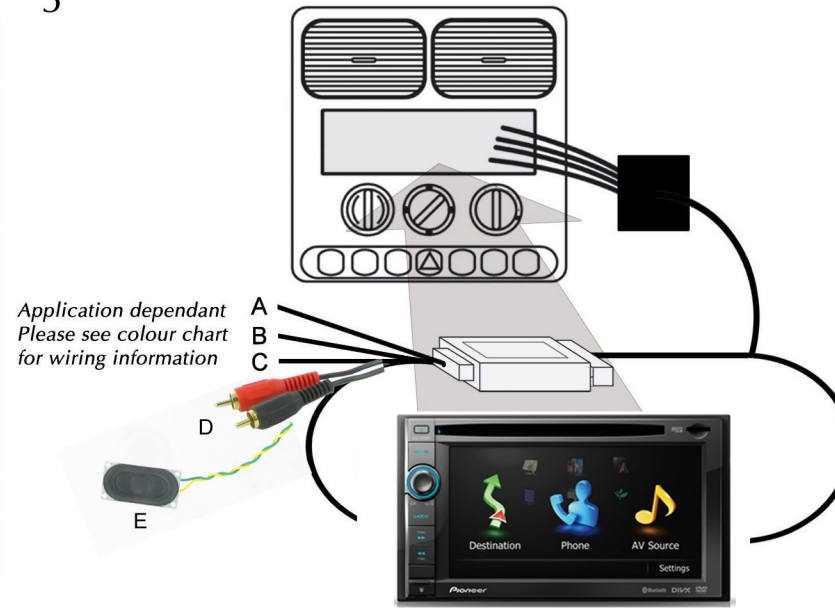
### 3



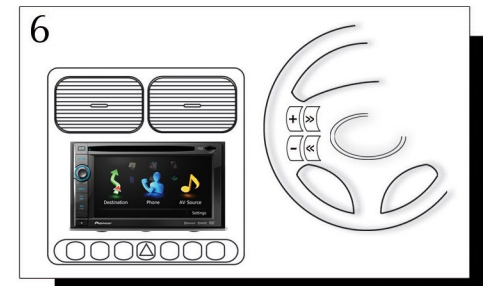
### 4



### 5



### 6



- |                       |  |
|-----------------------|--|
| A - Pink Wire         | = Speed Pulse  |
| B - Green Wire        | = Park Brake   |
| C - Purple/White Wire | = Reverse  |
| D - RCA Leads         | = Connect to aftermarket head unit aux in to retain factory aux plug |
| E - Speaker           | = Connect to slot on rear of facia plate                             |

If vehicle display remains blank, push and hold the source button on the steering wheel

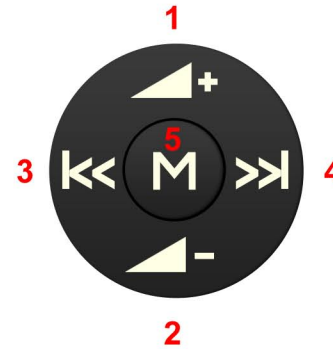
**Pioneer**

# Installation Guide

## Steering wheel control Interface



CA-R-FOR.005  
Ford Focus 2011>



- 1 - Volume +
- 2 - Volume -
- 3 - Track Down / Scan Down
- 4 - Track Up / Scan Up
- 5 - Mute

### Basic Focus/C-Max

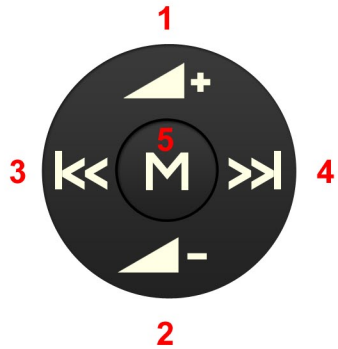
- 2 line radio display with car menu on instrument display.
- Use menu buttons **A** on steering wheel to navigate menu.



- 1 - Volume +
- 2 - Volume -
- 3 - Track Down / Scan Down
- 4 - Track Up / Scan Up
- 5 - Mute/ Mode - exit menu mode & switch off display

### Higher specification Focus/C-Max

- If the radio display is on use the menu buttons **A** on the steering to navigate the menu.
- If the radio display is not on, it will need to be switched on to operate the menu. To switch the display on press and hold the Mode/Mute button for 2 seconds. Once the display is on, a short press of the Mode/Mute button will enter menu mode. Once in menu mode the menu can be either be navigated with the steering wheel menu buttons or the radio steering wheel buttons. The operation of these buttons is as follows.



- 1 - Volume +
- 2 - Volume -
- 3 - Track Down / Scan Down
- 4 - Track Up / Scan Up
- 5 - Source

1. Press & hold **M (button 5)** for 2 Seconds
2. Press **up/down (Button 1/2)** till clock setting is selected.  
Then press **Right Arrow (Button 4)**
3. Press **up/down (Button 1/2)** till Set Date is selected then press **M (button 5)**
4. Once in the date set menu **up/down (Button 1/2)** will change the selected item & **left/right (Button 3/4)** will change which item is selected.
5. *Once Everything is set press M (button 5) to exit.*

*Time can be set with buttons on display*



Step2



Step3



Step4



Step5