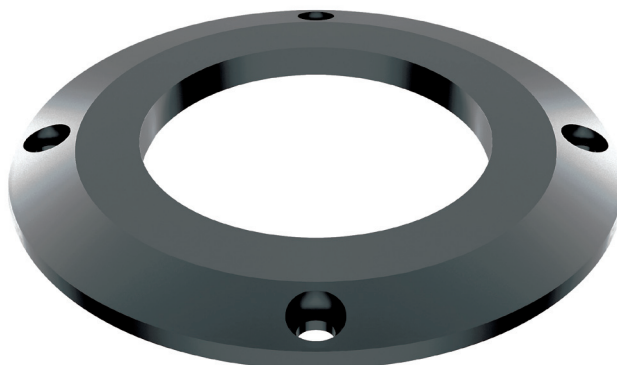
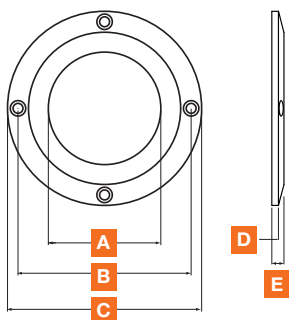


**ACCES** SPL Show **SERIES**  
**AFR 25**



1. Supplied mounting ring for flush mount installations.
2. Anodized aluminium; for maximum damping.

**AFR 25**



A	42,6 mm (1.7 in.)
B	67 mm (2.6 in.)
C	76 mm (3 in.)
D	3 mm (0.1 in.)
E	5,5 mm (0.2 in.)

**HOW TO MOUNT AFR**

